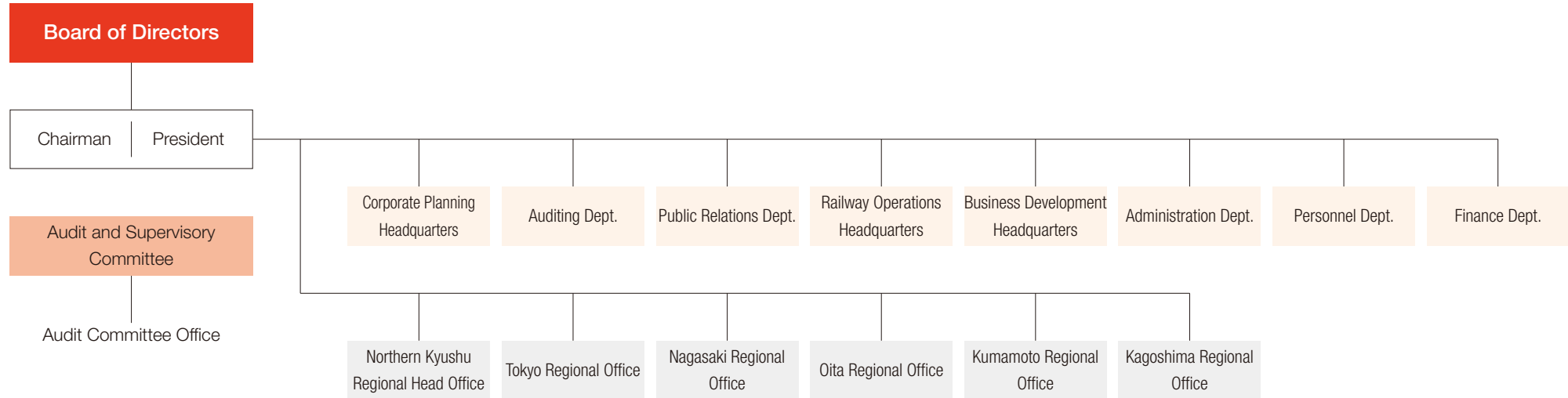


Introduction Digest	Financial and Non- Financial Highlights	History of Value Creation Initiatives Value Creation Process	Message from the President Message from the CFO	Progress on Our Medium- Term Business Plan Feature	Materiality	Corporate Governance	Safety and Service Development of Human Resources	Local Community Invigoration Dialog with Stakeholders	Environmental Initiatives	Information on Segments Financial Information	Overview Investor Information
------------------------	--	--	---	--	-------------	-------------------------	---	---	------------------------------	--	---

Overview

ORGANIZATIONAL CHART



Consolidated subsidiaries

TRANSPORTATION GROUP

Holding Company for Houhi Main Line*1
JR Kyushu Bus Company
JR Kyushu Jet Ferry Inc.
JR Kyushu Service Support Co., Ltd.
JR Kyushu Linen Co., Ltd.

CONSTRUCTION GROUP

KYUTETSU CORPORATION
Sanki Construction Co., Ltd.
JR Kyushu Housing Company
JR Kyushu Engineering, Ltd.
JR Kyushu Electric System Company
JR Kyushu Consultants Company

REAL ESTATE AND HOTELS GROUP

JR Hakata City Co., Ltd.
JR Kokura City Inc.
JR Nagasaki City Inc.
JR Oita City, Inc.
JR Kumamoto City Co., Ltd.
JR Kagoshima City Inc.
JR Miyazaki City Co., Ltd.
JR Kyushu Building Management Co., Ltd.
JR Kyushu-Rent-A-Car & Parking Co., Ltd.
JR Kyushu Senior Life Support, Inc.
JR Kyushu Huis Ten Bosch Hotel Co., Ltd.
JR Kyushu Hotels Inc.
JR Kyushu Station Hotel Kokura Inc.

Oyama Yumekobo, Inc.
JR Kyushu Business Development
(Thailand) Co., Ltd.
JR Kyushu Ekibiru Holdings Inc.
JR Kyushu Capital Management
(Thailand) Co., Ltd.
JR Kyushu Hotels And Resorts Holdings Inc.

RETAIL AND RESTAURANT GROUP

JR Kyushu Retail, Inc.
JR KYUSHU DRUG ELEVEN CO., LTD.*2
JR Kyushu Food Service Inc.
JR Kyushu Fast Foods Inc
Inc Train D'or
Manbou Corp.
Shanghai JR Kyushu Food Service Inc.
JR Kyushu Farm Co., Ltd.

OTHER GROUP COMPANIES

JR Kyushu Agency Co., Ltd.
Caterpillar Kyushu Ltd.
JR Kyushu Resort Development Co., Ltd.
JR Kyushu Trading Co., Ltd.
JR Kyushu Life Service Co., Ltd.
JR Kyushu System Solutions Inc.
JR Kyushu Business Partners Company
JR Kyushu Secom Inc.*2

*1 While we own less than 50% of the voting rights, this is still considered a consolidated subsidiary as we control the company to all intents and purposes.

*2 Company accounted for using the equity method

(as of July 1, 2020)

Introduction
DigestFinancial and Non-
Financial HighlightsHistory of Value
Creation Initiatives
Value Creation ProcessMessage from the
President
Message from the CFOProgress on Our Medium-
Term Business Plan
Feature

Materiality

Corporate
GovernanceSafety and Service
Development of
Human ResourcesLocal Community
Invigoration
Dialog with StakeholdersEnvironmental
InitiativesInformation on Segments Overview
Financial Information**Investor Information**

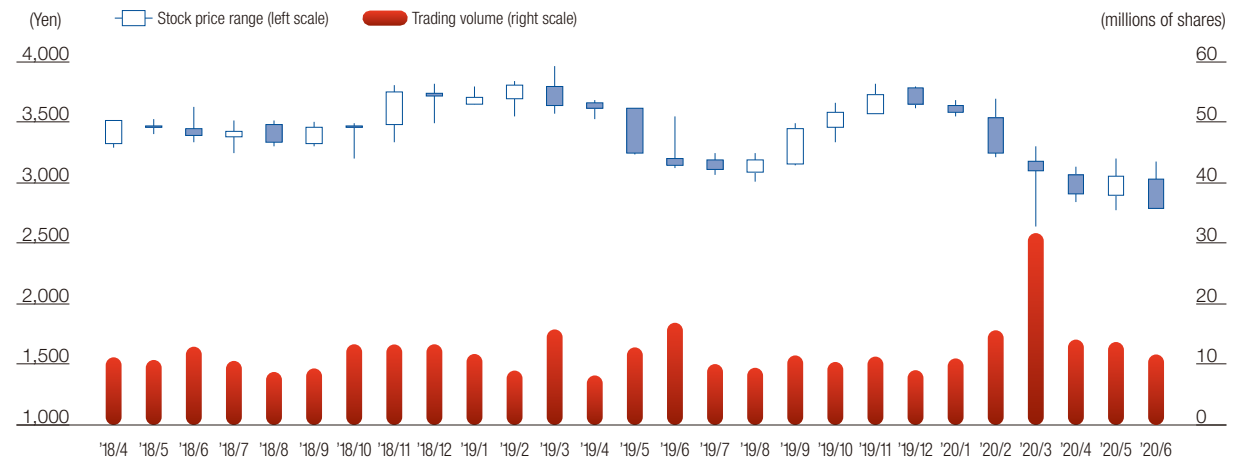
Investor Information

Stock Exchange Listings	Tokyo Stock Exchange, First Section Fukuoka Stock Exchange
Securities code	9142
Business year	April 1 to March 31 of the following year
Record Date for Voting Rights	Every March 31
Ordinary General Meeting of Shareholders	Meeting held every June
Record Date for Dividends	Year-end: Every March 31 Interim: Every September 30
Share Unit Number	100 shares
Total Number of Authorized Shares	640,000,000 shares
Total Number of Issued Shares	157,301,600 shares

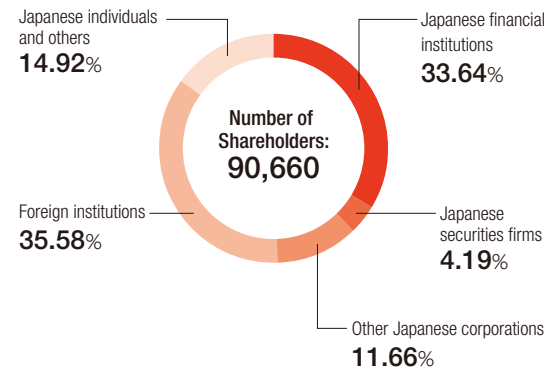
(as of Tuesday, March 31, 2020)

Major Shareholders(as of Tuesday, March 31, 2020)	% Voting rights
The Master Trust Bank of Japan, Ltd. (Trust Account)	8.38
Japan Trustee Services Bank, Ltd. (Trust Account)	4.14
RAILWAY HOLDINGS, L.L.C. Standing proxy: Operations Headquarters, Morgan Stanley MUFG Securities Co., Ltd.	4.09
CGMI PB CUSTOMER ACCOUNT Standing proxy: Securities Operations Department, Citibank, N.A., Tokyo Branch	3.94
STATE STREET BANK WEST CLIENT - TREATY 505234 Standing proxy: Mizuho Bank, Ltd., Settlement & Clearing Services Department	3.23
Japan Trustee Services Bank, Ltd. (Trust Account 5)	2.15
Taiyo Life Insurance Company	2.03
NIPPON LIFE INSURANCE COMPANY	1.99
JP MORGAN CHASE BANK 385151 Standing proxy: Mizuho Bank, Ltd., Settlement & Clearing Services Department	1.75
JP Morgan Securities Japan Co., Ltd.	1.74

Stock Price Range/Trading Volume



Distribution of Share Ownership by Type of Shareholder (as of March 31, 2020)



Total Shareholders Return

