

November 26, 2018
Kyushu Railway Company
Toshihiko Aoyagi, President
Inquiries: Administration Division, Administration Department
+81-92-474-2501
Securities Code: 9142
<http://www.jrkyushu.co.jp/english/>

The following is information on the status of corporate governance at Kyushu Railway Company (hereinafter, “the Company”).

I. Basic Corporate Governance Policies and Basic Information on Capital Structure and Corporate Attributes

1. Basic Approach

- (1) The JR Kyushu Group is involved in a variety of businesses based on safety and service born of its own strengths. At its base of operations in Kyushu, the Group continues to take on the challenge of creating an invigorated Japan and greater Asia in a tireless and enthusiastic manner.
- (2) In order to realize such a Japan and greater Asia, the Company aims to be a corporation in which customers, local community members, business partners, employees and their families, and shareholders can have lasting trust. To this end, the Company is establishing and improving frameworks and systems for decisive and prompt decision making as well as appropriate disclosure of information, while guaranteeing transparency and fairness in management. The Company is also further enhancing its efforts in corporate governance to realize continuous growth and long-term improvement in corporate value. Furthermore, the Company has established the Kyushu Railway Company Basic Corporate Governance Policy to serve as a basic approach and application guideline for its corporate governance.

Reasons for Not Implementing Each Principle of Japan’s Corporate Governance Code

Principle 1-4: Cross-Shareholdings

The Company engages in cross-shareholdings after comprehensively taking into account such factors as enhancing its relationship and collaboration with business partners as well as creating synergistic effects with Group businesses.

On an annual basis, the Board of Directors assesses whether or not to hold individual cross-shareholdings, thereby examining factors such as whether the purpose of maintaining the holdings is appropriate, and also whether gains related to the holdings cover the Company’s cost of capital or otherwise whether there are prospects for future improvement.

With respect to exercising voting rights of its cross-shareholdings, the Company casts opposing votes when there are concerns regarding corporate governance, and otherwise exercises its voting rights upon giving consideration as to whether or not a proposal will contribute to enabling growth of the entity concerned, improving its corporate value, or otherwise.

Supplementary Principle 4-1 (3)

The Board of Directors decides on the president from among directors who have been nominated and appointed based on a selection standard determined by the Board of Directors, such that values a high level of ethics, personality, character and management ability.

The Company will continue to more extensively consider matters with respect to mechanisms regarding tasks that include development and nomination thereof.

Supplementary Principle 4-10 (1)

The Board of Directors appoints director candidates based on selection standards it has decided on for director candidates. The Company will continue to more extensively consider matters with respect to mechanisms particularly for nominating officers, while fully drawing on the knowledge and advice of outside officers.

When determining compensation levels, reports are made by the Compensation Advisory Committee, which comprises the president as well as outside directors, to the Board of Directors, which then decides on compensation amounts based on these reports. These amounts are held within a limit set in advance at the General Meeting of Shareholders.

Disclosure Based on Each Principle of Japan's Corporate Governance Code

Principle 1-7: Transactions between Related Parties

In the event a transaction occurs, or the potential of a transaction may occur, between the Company and its officers or key shareholders (shareholders who own more than 10% of total voting rights), the transaction is closely monitored through procedures that involve the prior approval of the Board of Directors to ensure that the common interests and rights of the Company and its shareholders are not jeopardized. Furthermore, the Company conducts surveys of the directors every year in regard to the occurrence of transactions with related parties in an effort to manage and monitor such transactions.

Principle 2-6: Roles of Corporate Pension Funds as Asset Owners

Not applicable because the Company has not adopted a corporate pension fund plan.

Principle 3-1: Enhancement of Information Disclosure

- (i) The Company's management philosophy and other important items have been determined in the JR Kyushu Group Medium-Term Business Plan 2016–2018. The plan has been disclosed on the Company's corporate website.
- (ii) The Company's basic approach to corporate governance is as stated in Part I.1 of this report, entitled "Basic Approach."
- (iii) In order to ensure that a director is provided an appropriate level of compensation based on his or her role and responsibilities, the Company has in place a system that takes into account a director's motivation toward improving business performance and corporate value. When determining compensation levels, reports are made by the Compensation Advisory Committee, which comprises the president as well as outside directors, to the Board of Directors, which then decides on compensation amounts based on these reports. These amounts are held within a limit set in advance at the General Meeting of Shareholders.
- (iv) When nominating directors, the Board of Directors decides on candidates based on a selection standard determined by the Board of Directors, such that values a high level of ethics, personality, character and management ability. The Board of Directors makes a proposal to a General Meeting of Shareholders regarding the dismissal of a director, upon having deliberated on such matter, if such director ceases to satisfy the aforementioned selection standard, or if corporate value has become significantly impaired as a result of such director having exercised negligence with respect to his or her professional duties, or if circumstances are such that would constitute grounds for disqualification otherwise. Approval of the Audit and Supervisory Committee is to be obtained prior to nominating a candidate for director who is an Audit and Supervisory Committee member.
- (v) When appointing, dismissing or nominating a director, the Company explains the individual reasons for such appointment, dismissal or nomination.

Supplementary Principle 4-1 (1)

The Board of Directors engages in decision making related to management and the Executive Committee engages in decision making related to business execution. In doing so, the Company works to separate the roles of management and business execution.

The Board of Directors decides on important items such as those stipulated by laws and regulations and the Articles of Incorporation, including the Regulations of the Board of Directors. Decision making on other items related to business execution is conducted by the Executive Committee. Furthermore, in accordance with the Guidelines on Administrative Authorities, authority related to day-to-day business execution is given to the relevant corporate officers as well as the heads of each department.

Principle 4-9: Independence Evaluation Criteria and Qualifications for Independent Outside Directors

The independence evaluation criteria and the qualifications for independent outside directors are listed under “Other Items Related to Independent Officers” in the “Independent Officers” section of Part II.1 of this report, entitled “Items Related to Institutional Organization, Organizational Management, Etc.”

Supplementary Principle 4-11 (1)

The Company’s Board of Directors appoints a diverse range of director candidates with varying expertise and experience, while considering the notion of striking a balance in the Board of Directors overall, and accordingly aims to develop an optimal workforce capable of effectively and efficiently carrying out such functions. Currently, it comprises inside directors who are well versed in the activities of each business division as well as a number of outside directors who offer advice based on their wide range of expertise and, from an independent standpoint, provide monitoring and supervisory functions in a highly effective manner.

Supplementary Principle 4-11 (2)

The Company limits the number of companies at which directors serve concurrent roles to the extent reasonable. In addition, the Company discloses important information on those serving concurrent roles in its Business Report.

Supplementary Principle 4-11 (3)

The Company recognizes that ensuring the effectiveness of the Board of Directors leads to improvement in its corporate value over the medium to long term. As such, the Company conducted surveys (anonymous form) of directors and auditors, which helped the Company analyze and evaluate the Board of Directors’ effectiveness. The overview of the results of these surveys is as follows.

- A survey of the directors and auditors was carried out, and the results of the survey, as well as the issues highlighted by it, were reported to and shared among the Board of Directors.
- In June 2018, the Company transitioned to a company with audit and supervisory committee and adopted Executive Officer System. In conjunction with that, the Company has decided to carry out a drastic overhaul with respect to its number and composition of directors, and items to be brought up at Board of Directors’ meetings, based on results of the aforementioned survey.

Supplementary Principle 4-14 (2)

The Company implements training for all of its directors related to the Companies Act and other laws. This training is provided by attorneys and other outside specialists.

Principle 5-1: Policy for Constructive Dialogue with Shareholders

In order to realize sustainable growth and improve corporate value over the medium to long term, the Company engages in earnest dialogue with its shareholders. The opinions received through such dialogue are reported in an appropriate manner to the Board of Directors.

The departments responsible for engaging in shareholder dialogue are the Strategy Management Department of the Corporate Planning Headquarters and the Administration Department. The Director General of the Corporate Planning Headquarters provides supervision for this dialogue. In addition, these departments

exchange opinions and share the contents of shareholder dialogues with other relevant departments.

The Company decides on the individual members who will engage in shareholder dialogue based on shareholder requests and matters of concern. As a general rule, directors will also be present during these dialogues.

In regard to the methods in which the Company uses to engage in dialogue with its shareholders, the Company holds financial results presentations and discloses the contents of these presentations on its corporate websites. In addition, the Company carries out other methods for dialogue, such as private meetings.

When engaging in dialogue with its shareholders, the Company makes concerted efforts to prevent insider transactions in accordance with internal regulations related to information management and appropriate disclosure.

2. Capital Structure

Ratio of foreign investors	More than 30%
----------------------------	---------------

Major Shareholders

Name	Number of shares held (shares)	Ratio (%)
Morgan Stanley MUFG Securities Co., Ltd.	8,879,634	5.55
The Master Trust Bank of Japan, Ltd. (Trust Account)	7,674,700	4.80
JPMorgan Securities Japan Co., Ltd.	5,430,089	3.39
STATE STREET BANK WEST CLIENT - TREATY 505234	4,546,800	2.84
Japan Trustee Services Bank, Ltd. (Trust Account)	4,398,500	2.75
Taiyo Life Insurance Company	3,200,000	2.00
Japan Trustee Services Bank, Ltd. (Trust Account 5)	3,037,300	1.90
BNY GCM CLIENT ACCOUNT JPRD AC ISG (FE-AC)	3,015,472	1.88
GOLDMAN, SACHS & CO. REG	2,919,734	1.82
Meiji Yasuda Life Insurance Company	2,416,800	1.51

Controlling shareholder (except for Parent company)	—
Parent company	None

Supplementary Information

Major shareholders are as listed in the current register of shareholders as of March 31, 2018.

3. Company Attributes

Listed stock market and market section	Tokyo, First Section; Fukuoka: existing market
Fiscal year-end	March
Industry classification	Road & Rail Transportation
Number of employees (consolidated) as of the end of the most recent fiscal year	Over 1,000
Operating revenues (consolidated) as of the end of the most recent fiscal year	¥100 billion–¥1 trillion
Number of subsidiaries (consolidated) as of the end of the most recent fiscal year	More than 10 but less than 50

4. Index of Policies for the Protection of Minority Shareholders Related to Transactions with Controlling Shareholders

N/A

5. Other Special Circumstances That Significantly Affect Corporate Governance

N/A

II. The Status of Business Management Systems for Managerial Decision Making, Execution, and Supervision, and Other Corporate Governance Systems

1. Items Related to Institutional Organization, Organizational Management, Etc.

Organizational structure	Company with audit and supervisory committee
--------------------------	--

Directors

Statutory number of directors	17
Statutory term of office for directors	1 year
Chair of Board of Directors	Chairman
Number of directors	13
Appointment status of outside directors	Appointed
Number of outside directors	6
Number of independent outside directors	6

Relationship with the Company (1)

Name	Attributes	Relationship with the Company*											
		a	b	c	d	e	f	g	h	i	j	k	
Koji Toshima	Former member of another company												○
Masayoshi Nuki	Former member of another company								○				
Izumi Kuwano	Former member of another company								○				
Eiichi Kuga	Other												○
Kazuhide Ide	Former member of another company								○				
Yasunori Eto	Attorney												○

* Categories for "Relationship with the Company"

* "○" indicates that the director currently falls under the category, or did so recently, and

"△" indicates that the director fell under the category in the past,

* "●" indicates that a close relation falls under the category, or did so recently, and "▲" indicates that a close relation fell under the category in the past.

a. Executive of a listed company or a subsidiary thereof

b. Executive or non-managing director of the parent of a listed company

c. Executive of a fellow subsidiary of a listed company

d. Party or company executive who establishes a listed company as its primary client

e. Principal client of a listed company or an executing person thereof

f. Consultant, accountant, or legal expert receiving considerable cash and other assets other than directors' compensation from a listed company

g. Principal shareholder of a listed company (where said principal shareholder is a corporation, an executive of said corporation)

h. Executive (directors themselves only) of a listed client company (where d, e, and f do not apply)

i. Executive (directors themselves only) of a company that has a relationship involving cross-assumption of office of outside directors

j. Executive (directors themselves only) who receives contributions from a listed company

k. Other

Relationship with the Company (2)

Name	Audit and Supervisory Committee member	Independent director	Supplementary explanation on compatibility	Reason for appointment
Koji Toshima		Yes	(Important information on concurrent post(s)) Special Advisor, YASKAWA Electric Corporation, President, Kitakyushu Chamber of Commerce and Industries	Mr. Toshima was appointed in anticipation that he will leverage his experience and knowledge gained from his long involvement in the management of YASKAWA Electric Corporation, a global Kyushu-based company, to supervise and monitor the Company's management from an independent standpoint. In addition, it has been determined that Mr. Toshima is sufficiently independent of the Company due to the fact that he fulfills the requirements for independent directors as defined by the Tokyo Stock Exchange as well as the Company's independence evaluation criteria for outside officers, and therefore no conflict of interest with general shareholders should arise. His appointment also reflects the Company's belief that he will supervise its management from an independent perspective.
Masayoshi Nuki		Yes	(Important information on concurrent post(s)) Senior Executive Adviser, Kyushu Electric Power Company, Incorporated, Chair, Fukuoka	Mr. Nuki was appointed in anticipation that he will leverage his experience and knowledge gained from his long involvement in the management of Kyushu Electric

Name	Audit and Supervisory Committee member	Independent director	Supplementary explanation on compatibility	Reason for appointment
			<p>Association of Corporate Executives</p> <p>Although the Company has a business relationship with Kyushu Electric Power Company, Incorporated including payment of electric power rates, the monetary value of such transactions are within the scope of the independence criteria set by the Company.</p>	<p>Power Company, as well as in the financial industry of Kyushu, to supervise and monitor the Company's management from an independent standpoint. In addition, it has been determined that Mr. Nuki is sufficiently independent of the Company due to the fact that he fulfills the requirements for independent directors as defined by the Tokyo Stock Exchange as well as the Company's independence evaluation criteria for outside officers, and therefore no conflict of interest with general shareholders should arise. His appointment also reflects the Company's belief that he will supervise its management from an independent perspective.</p>
Izumi Kuwano		Yes	<p>(Important information on concurrent post(s)) President, Tamanoyu Co., Ltd. Outside Director, Oita Bank Co., Ltd., President, Yufuin Onsen Tourism Foundation</p> <p>Although the Company has a business relationship with Tamanoyu Co., Ltd. including payment of hotel accommodation fees, the monetary value of</p>	<p>Ms. Kuwano was appointed in anticipation that she will leverage her experience and knowledge gained from her long involvement in the management of Tamanoyu Co., Ltd., as well as in the field of tourism, to supervise and monitor the Company's management from an independent standpoint. In addition, it has been determined that Ms. Kuwano is sufficiently</p>

Name	Audit and Supervisory Committee member	Independent director	Supplementary explanation on compatibility	Reason for appointment
			<p>such transactions are within the scope of the independence criteria set by the Company. Although the Company has a business relationship with Oita Bank Co., Ltd. which includes borrowing of funds, the monetary value of such transactions are within the scope of the independence criteria set by the Company.</p>	<p>independent of the Company due to the fact that she fulfills the requirements for independent directors as defined by the Tokyo Stock Exchange as well as the Company's independence evaluation criteria for outside officers, and therefore no conflict of interest with general shareholders should arise. Her appointment also reflects the Company's belief that she will supervise its management from an independent perspective.</p>
Eiichi Kuga	Yes	Yes	-	<p>Mr. Kuga was appointed in anticipation that he will leverage his wide range of experience and knowledge gained in police administration to monitor the business execution of the Company's directors from an independent standpoint and from the perspective of an experienced administrator. In addition, it has been determined that Mr. Kuga is sufficiently independent of the Company due to the fact that he fulfills the requirements for independent directors as defined by the Tokyo Stock Exchange as well as the Company's independence evaluation criteria for outside officers, and therefore no conflict of interest with</p>

Name	Audit and Supervisory Committee member	Independent director	Supplementary explanation on compatibility	Reason for appointment
				<p>general shareholders should arise. His appointment also reflects the Company's belief that he will supervise its management from an independent perspective.</p>
Kazuhide Ide	Yes	Yes	<p>(Important information on concurrent post(s)) Chairman, The Chikuho Bank, Ltd.</p> <p>Although the Company has a business relationship with The Chikuho Bank, Ltd. which includes borrowing of funds, the monetary value of such transactions are within the scope of the independence criteria set by the Company.</p>	<p>Mr. Ide was appointed due to his long involvement in the management of Chikuho Bank, Ltd. and in anticipation that he will monitor the business execution of the Company's directors from an independent standpoint and from the perspective of an experienced executive from the financial industry. In addition, it has been determined that Mr. Ide is sufficiently independent of the Company due to the fact that he fulfills the requirements for independent directors as defined by the Tokyo Stock Exchange as well as the Company's independence evaluation criteria for outside officers, and therefore no conflict of interest with general shareholders should arise. His appointment also reflects the Company's belief that he will supervise its management from an independent perspective.</p>
Yasunori Eto	Yes	Yes	<p>(Important information on concurrent post(s)) Attorney</p>	<p>Mr. Eto was appointed in anticipation that he will leverage his wide range of experience</p>

Name	Audit and Supervisory Committee member	Independent director	Supplementary explanation on compatibility	Reason for appointment
				<p>and knowledge gained as a public prosecutor and an attorney to monitor the business execution of the Company's directors from an independent standpoint and from the perspective of a legal expert. In addition, it has been determined that Mr. Eto is sufficiently independent of the Company due to the fact that he fulfills the requirements for independent directors as defined by the Tokyo Stock Exchange as well as the Company's independence evaluation criteria for outside officers, and therefore no conflict of interest with general shareholders should arise. His appointment also reflects the Company's belief that he will supervise its management from an independent perspective.</p>

Audit and Supervisory Committee

Member Composition and Chairman Attributes

	Total members	Full-time members	Inside directors	Outside directors	Chair
Audit and Supervisory Committee	4	2	1	3	Outside director

Directors and employees who are to assist with the duties of the Audit and Supervisory Committee	Yes
--	-----

Items Related to Independence from Executive Directors of Such Directors and Employees

Employees of the Audit and Supervisory Committee Office that receive necessary instructions for Audit and Supervisory Committee duties from Audit and Supervisory Committee members of the Company will not receive guidance from directors (excluding directors who are Audit and Supervisory Committee members) with regard to those instructions.

Collaboration between Audit and Supervisory Committee, Accounting Auditor, and Internal Audit Department

Audit and Supervisory Committee, the accounting auditor, and the Internal Audit Department hold meetings on a regular basis where information is exchanged regarding audit plans, methods, and results. In addition, important information and opinions are exchanged between the Audit and Supervisory Committee, the accounting auditor, and the Internal Audit Department, when necessary, in an effort to enhance the depth of mutual audits.

Voluntary Committees

Establishment of voluntary committees that correspond with the Nomination Committee and the Compensation Committee	Yes
--	-----

Establishment of Voluntary Committee, Member Composition, and Chairman Attributes

Voluntary Committee Corresponding with the Compensation Committee

Committee name			Compensation Advisory Committee			
Total members	Full-time members	Inside directors	Outside directors	Outside experts	Others	Chair
4	1	1	3	0	0	Outside director

Supplementary Information

None

Independent Officers

Number of independent officers	6
--------------------------------	---

Other Items Related to Independent Officers

Independence Evaluation Criteria for Outside Officers

Outside officers shall be deemed to be independent if they do not fall under any of the following items:

- (1) a current executive director, executive officer, corporate officer, or employee (hereinafter, “executive”) of the Company or any of its subsidiaries (hereinafter, “Group companies”), or someone who has served in such a position in the past 10 fiscal years
- (2) a spouse or relative by blood or marriage within the second degree of a current executive of a Group company (to the extent such a person is deemed to be an important party), or of someone who has served in such a position in the past three fiscal years
- (3) an entity of whom the Company is a major business partner (that is, a recipient of payment from the Company in excess of 2% of said recipient’s average consolidated sales over the period of the previous three fiscal years), or, in the event such an entity is a corporation, an executive person of said corporation
- (4) a major business partner of the Company (that is, an entity that makes payments to the Company that account for over 2% of the Company’s average consolidated sales over the period of the preceding three fiscal years), or, in the event such a business partner is a corporation, an executive person of said corporation
- (5) a major lender to the Company (that is, an entity that provides loans to the Company in excess of 2% of the Company’s average consolidated assets over the period of the preceding three fiscal years), or, in the event such a lender is a corporation, an executive of said corporation
- (6) a legal expert, etc., whose remuneration received from the Company, other than officers’ compensation, exceeds ¥10 million on average per annum over the period of the preceding three fiscal years, or, if such an expert belongs to a corporation, 2% of the consolidated sales of said corporation over the same period
- (7) a director or executive of an organization that receives donations in excess of ¥10 million on average per annum from the Company over the period of the preceding three fiscal years
- (8) a major shareholder of the Company (that is, a shareholder who holds 10% or more of the total number of voting rights of the Company), or, in the event such a shareholder is a corporation, an executive of said corporation
- (9) a spouse or relative by blood or marriage within the second degree of a person who falls under any of items (3) through (8) (to the extent such a person is deemed to be an important party)
- (10) in addition to the preceding items, a person who is unable to independently perform duties as an outside director or an outside corporate auditor due to a conflict of interest with the Company or to other exceptional circumstances

Incentives

Implementation of initiatives related to providing incentives for directors	Yes
---	-----

Supplementary Information

The Company adjusts individual compensation levels based on a director’s responsibilities and results achieved in the previous fiscal year.

Recipients of stock options	None
-----------------------------	------

Supplementary Information

None

Director Compensation

Disclosure of Individual Director’s Compensation	Individual compensation amounts are not disclosed.
--	--

Supplementary Information

The Company discloses total compensation paid to directors in its Business Report and Securities Report.

Policy for determining compensation level and calculation methods	Yes
---	-----

Policy for Determining Compensation Level and Calculation Methods

In order to ensure that a director is provided an appropriate level of compensation based on his or her role and responsibilities, the Company has in place a system that takes into account a director's motivation toward improving business performance and corporate value. When determining compensation levels, reports are made by the Compensation Advisory Committee, which comprises the president as well as outside directors, to the Board of Directors, which then decides on compensation amounts based on these reports. These amounts are held within a limit set in advance at the General Meeting of Shareholders.

Support Systems for Outside Directors

To ensure collaboration between the Internal Audit Department, the Board of Directors, and the Audit and Supervisory Committee, the Company has established the Administration Department, which serves as a contact point for the outside directors, and the Audit and Supervisory Committee Office, which serves as a contact point for the Audit and Supervisory Committee. A system is also in place that allows outside directors to freely exchange opinions when necessary and provides them with preliminary explanations from each department.

Status of Persons Who Have Retired from a Position Such as Representative Director and President

Retired Representative Director and Presidents, etc. Holding Advisory or Any Other Position in the Company

Name	Title/position	Responsibilities	Working form and conditions (full-time/part-time, paid/unpaid, etc.)	Date of retirement from position such as president	Term of office
Koji Tanaka	Honorary advisor	Advice upon request from the Company, social contribution activities, etc.	Part-time, unpaid	June 21, 2002	Term of office not stipulated
Susumu Ishihara	Senior executive advisor	Advice upon request from the Company, economic organization activities, social contribution activities, etc.	Full-time, paid	June 23, 2009	Annual renewal

Total number of retired representative director and presidents, etc. holding advisory or any other position in the Company	2
--	---

Other Items

In addition to responding to inquiries of the president with respect to the Company's business activities, the honorary advisor and senior executive advisor also engage

external activities that benefit the Company and society.

The Company deems that there are no problems with respect to governance given that neither individual is involved in managerial decision-making.

2. Items Related to Functions for Business Execution, Audits and Supervision, Nomination, Determining Compensation, Etc. (Overview of Current Corporate Governance System)

In June 2018, the Company transitioned to a company with audit and supervisory committee while also adopting Executive Officer System with aims that include strengthening the supervisory function of its Board of Directors, speeding up managerial decision-making, achieving efficient corporate management, and separating the task of business execution from those of managerial decision-making and the supervisory function.

● Board of Directors

The Board of Directors decides on important items such as those stipulated by laws and regulations, including the Regulations of the Board of Directors. The Board also supervises the business execution of the Company's directors, senior corporate officers and corporate officers. The Board of Directors meets once a month as a general rule, and comprises a total of 13 members, including nine directors (excluding directors who are Audit and Supervisory Committee members) and four directors who are Audit and Supervisory Committee members. Meanwhile, the Company appoints six outside directors to the Board of Directors to further strengthen its supervisory function. In addition, the Company has established the Executive Committee, which meets once a week as a general rule. It deliberates on items for which authority has been delegated to it following a resolution by the Board of Directors pursuant to the Articles of Incorporation, and also on important items related to business operations. The Company has also established the Group Executive Committee. It deliberates on business strategy, such as the JR Kyushu Group's management vision and the allocation of management resources, as well as important items pertaining to each Group company. By steadily carrying out business management at each Group company, the Group Executive Committee is making efforts to reinforce the comprehensive strengths of the JR Kyushu Group.

● Audit and Supervisory Committee

The Audit and Supervisory Committee receives reports on important matters related to audits and other such matters, and also holds discussions and makes decisions regarding those matters. As a general rule, the Audit and Supervisory Committee meets once a month and holds extraordinary meetings when necessary. The Company's Audit and Supervisory Committee comprises four Audit and Supervisory Committee members (of which, three are outside directors), and carries out audits and other tasks with respect to business execution of the Company's directors, senior corporate officers and corporate officers.

● Accounting Auditor

The Company selects and evaluates an accounting auditor based on standards determined by the Audit and Supervisory Committee. The Company makes efforts to maintain an accounting auditor with a high level of independence and expertise.

● Policy and Procedure for Appointment

When nominating directors (excluding Audit and Supervisory Committee members), the Board of Directors decides on candidates based on a selection standard determined by the Board of Directors, such that values a high level of ethics, personality, character and management ability. The Board of Directors makes a proposal to a General Meeting of Shareholders regarding the dismissal of a director, upon having deliberated on such matter, if such director ceases to satisfy the aforementioned selection standard, or if corporate value has become significantly impaired as a result of such director having exercised negligence with respect to his or her professional duties, or if circumstances are such that would constitute grounds for disqualification otherwise.

With respect to nominating a candidate for director who is an Audit and Supervisory

Committee member, such candidates are selected based on a selection standard determined by the Board of Directors, and the Board of Directors decides on candidates who have obtained approval of the Audit and Supervisory Committee.

- **Liability Limitation Agreement**

In accordance with the provision of Article 427, Paragraph 1, of the Companies Act, the Company has entered into an agreement with its outside directors that limits the liability under Article 423, Paragraph 1, of the Companies Act. The amount of liability limited based on this agreement is held to the minimum amount permissible by laws and regulations.

3. Reasoning for Selecting Current Corporate Governance System

The Company endeavors to further enhance its corporate governance by including Audit and Supervisory Committee members with voting rights at the meetings of the Board of Directors in the members of the Board of Directors, and strengthening the supervisory function of the Board of Directors. Furthermore, the Company endeavors to further heighten its corporate value by delegating a portion of authority for execution of important operations to directors on the basis of its Articles of Incorporation and resolution of its Board of Directors, and by realizing swifter and more efficient operations. The Company has selected the aforementioned corporate governance system to such ends.

III. Operational Status of Policies for Shareholders and Other Stakeholders

1. Initiatives to Invigorate the General Meeting of Shareholders and Smoothly Facilitate Voting

	Supplementary information
Early dispatch of Notice of Convocation	Materials are sent roughly three weeks prior to the General Meeting of Shareholders.
Setting the date of the General Meeting of Shareholders on days that do not conflict with other companies	The General Meeting of Shareholders is held on days that do not conflict with other companies.
Voting by electromagnetic method	The Company has enabled Internet voting.
Initiatives to improve the voting environment for other institutional investors through a commitment to electronic voting platforms	The Company utilizes the electronic voting platform operated by ICJ, Inc.
Offering of Notice of Convocation (abstract) in English	The Company translates the Notice of Convocation (abstract) and makes it available on its corporate website.

2. Status of IR Activities

	Supplementary information	Information directly from representatives
Preparation and announcement of disclosure policy	The disclosure policy has been released on the IR information page of the Company's corporate website.	
Regular information sessions for analysts and institutional investors	Regular information sessions are held after second quarter and year-end results announcements.	Yes
Regular information sessions for overseas investors	Regular information sessions are held for overseas investors.	Yes
IR materials posted on corporate website	Materials not related to financial results and information are posted on the IR information page of the Company's corporate website in a timely manner.	
Establishment of an IR division (personnel)	The Strategy Management Department of the Corporate Planning Headquarters oversees the Company's IR activities.	

3. Status of Initiatives for Respecting Stakeholder Perspective

	Supplementary information
Internal regulations on respecting stakeholder perspective	Initiatives regarding stakeholders are determined under the Medium-Term Business Plan.
Implementation of environmental conservation and CSR activities	Efforts for continuous environmental conservation are being conducted in accordance with the Company's basic principles and policies for environmental conservation activities. Moreover, environmental reports summarizing the JR Kyushu Group's environmental conservation activities are being created for inclusion on the Company's corporate website.

IV. Items Related to Internal Control Systems, Etc.

Basic Approach and Status of Maintenance for Internal Control Systems

Based on the Companies Act and the Companies Act Enforcement Regulations, the Company and Group companies have in place systems for ensuring the appropriateness of business operations (hereinafter, “internal control systems”). The Company is engaging in the following initiatives in regard to internal control systems.

1. System for Ensuring the Business Execution of Directors and Employees of the Company and Group Companies Complies with Laws, Regulations, and the Articles of Incorporation

The Company has formulated the JR Kyushu Group’s Code of Ethics to serve as a standard for conduct that works to reinforce corporate ethics with each officer (including corporate officers, which includes senior corporate officers) and employee of the Company and Group companies and ensure compliance with laws and regulations. The Administration Department has been put in charge of implementing this code groupwide and also carries out employee training and other initiatives. In addition, the Audit and Supervisory Committee conducts audits and other tasks with respect to the Company’s directors, while the Internal Audit Department audits the status of compliance with laws and regulations among employees of the Company and Group companies, and reports regularly to the Board of Directors and the Audit and Supervisory Committee.

2. System for Storing and Managing Information Related to the Business Execution of Directors

In accordance with regulations for the management of written documents, information related to the business execution of the Company’s directors is recorded in written documents and through an electromagnetic medium (hereinafter, “documents, etc.,” collectively) is then stored. The documents, etc., can be viewed at any time by the Company’s directors.

3. Regulations and Other Systems for Managing the Risk of Loss at the Company and Group Companies

Securing railway safety is the most important management issue for the Company. In accordance with safety management regulations created based on the revised Railway Business Act, which was enacted in October 2016, the Company has established a safety management system and works to ensure, maintain, and improve transportation safety. Safety promotion committees have been established at the head office and each branch office. These committees carry out initiatives toward preventing operational accidents and work-related injuries. Through training and other methods, these committees make thorough efforts to ensure the Company can make prompt responses in the event of large-scale accidents or natural disasters. For risks that would have a significant impact on the Company’s business operations, the Company will establish regulations at each division that oversees operations and put in place crisis management systems in order to ensure that an appropriate response is made in the event an issue arises.

The Company has established the Group Executive Committee, which oversees the management of Group companies. The Group Executive Committee is made up of mainly the Company’s corporate officers. The Committee ensures that systems are in place that allow for management to be conducted in an appropriate manner. In addition, the Committee supervises and monitors the management of Group companies by holding discussions on key management issues for the JR Kyushu Group based on regulations for business administration at affiliated companies. Furthermore, in addition to establishing relevant departments and designating officers (hereinafter, “corporate officers”) to help support and oversee Group management, the Company works to improve its governance by assigning its officers and employees to work as part-time directors and part-time auditors at Group companies.

4. Systems for Ensuring Effective Business Execution by Directors of the Company and Group Companies

The Company's Board of Directors delegates a portion of authority for execution of important operations when necessary on the basis of the Articles of Incorporation and resolutions of the Board of Directors. Meanwhile, the Company's Board of Directors also determines the amount of work undertaken by each senior corporate officer and corporate officer (hereinafter, "corporate officers, etc."), and ensures that systems are in place to allow each director and corporate officer to perform his or her assigned work in an efficient manner. In addition, the Company clarifies the authority and responsibilities of each director, corporate officer and employee through the Guidelines on Administrative Authorities, thereby securing an effective system for business execution.

For Group companies, the Company ensures an effective system for business execution through the establishment of regulations related to the division concerning duties, the chain of command, authority, decision making, and other organizational matters.

5. Systems for Ensuring the Appropriateness of Business Activities at the Company and Group Companies

In order to establish corporate ethics and reinforce compliance with laws and regulations, the Company and Group companies have formulated the JR Kyushu Group's Code of Ethics and established the JR Kyushu Group Corporate Ethics Committee, which deliberates issues related to corporate ethics and compliance. Furthermore, the Company operates the JR Kyushu Group Corporate Ethics Hotline (hereinafter, "the Corporate Ethics Hotline"), which serves as a means for employees of the Company or Group companies, as well as employees of business partners, to directly provide information regarding actions that may potentially be in violation of laws and regulations. The Company and Group companies maintain a resolute attitude toward antisocial forces, such as crime syndicates, companies affiliated with crime syndicates, and corporate extortionists, and rejects any kind of relationship with such organizations.

6. Systems for Reporting to the Company Facts Pertaining to Business Execution of Group Company Directors and Employees

The Company has provided regulations for business administration at affiliated companies. Group executive strategy and other crucial items are communicated through review and reporting systems for the Group Executive Committee, which comprises corporate officers connected to the Company. Moreover, the Company ensures a system for regular reporting on Group companies' operating results and financial conditions.

7. Items Regarding Employees Who Are to Assist with the Duties of the Company's Audit and Supervisory Committee

The Company's Audit and Supervisory Committee members have the authority to instruct Audit and Supervisory Committee Office employees on items necessary to activities of the Audit and Supervisory Committee.

In addition, Audit and Supervisory Committee Office employees will not receive guidance from directors (excluding directors who are Audit and Supervisory Committee members) or others with regard to those instructions.

8. Systems for Reporting to Audit and Supervisory Committee by Company and Group Company Directors and Employees

The Company ensures a system for Company and Group company directors, corporate officers, and employees to promptly report conduct to Audit and Supervisory Committee that may be in violation of laws, etc., or behavior that will have a major impact on the Company or Group companies. Moreover, the contents of messages regarding the implementation status of internal audits and other items from the Corporate Ethics Hotline are regularly reported to Audit and Supervisory Committee, as stipulated by law.

Regarding the Corporate Ethics Hotline, with the exception of consultations, the privacy of persons making reports will be strictly observed, and that such persons will not be treated adversely.

9. Items Regarding Policy on Prepayment of Fees or Reimbursement Procedures and Costs or Discharge of Debt for Performance of Duties by Audit and Supervisory Committee Members

The Company secures a budget for views related to the execution of audits on a yearly basis.

10. Other Systems for Securing Effective Auditing by Audit and Supervisory Committee

The Company's Audit and Supervisory Committee conducts regular roundtable discussions with the president and outside directors (excluding directors who are Audit and Supervisory Committee members). Moreover, Audit and Supervisory Committee regularly conduct roundtable discussions with the Internal Audit Department, accounting auditors, and Group company auditors, thus strengthening cooperation.

Basic Approach and Status of Policies for Eliminating Antisocial Forces

The Company's basic approach and status of policies for eliminating antisocial forces are as follows.

1. The Company stipulates the forbidding and elimination of any relationship with antisocial forces under its Basic Policy related to Internal Controls and, under the JR Kyushu Group Code of Ethics, calls for a resolute attitude in dealing with antisocial forces.
2. Through contracts and other means, the Company has introduced conditions and prepared systems for eliminating relationships between its business partners and antisocial forces.
3. The Company has appointed personnel in charge of preventing undue claims within its major departments.
4. The Company has prepared and applied internal rules and response guidelines.
5. The Company raises awareness on the importance of eliminating antisocial forces through a corporate ethics handbook and various training provided to all employees.

V. Other

1. Status of the Introduction of Takeover Defense Measures

Introduction of takeover defense measures	None
---	------

Supplementary Information

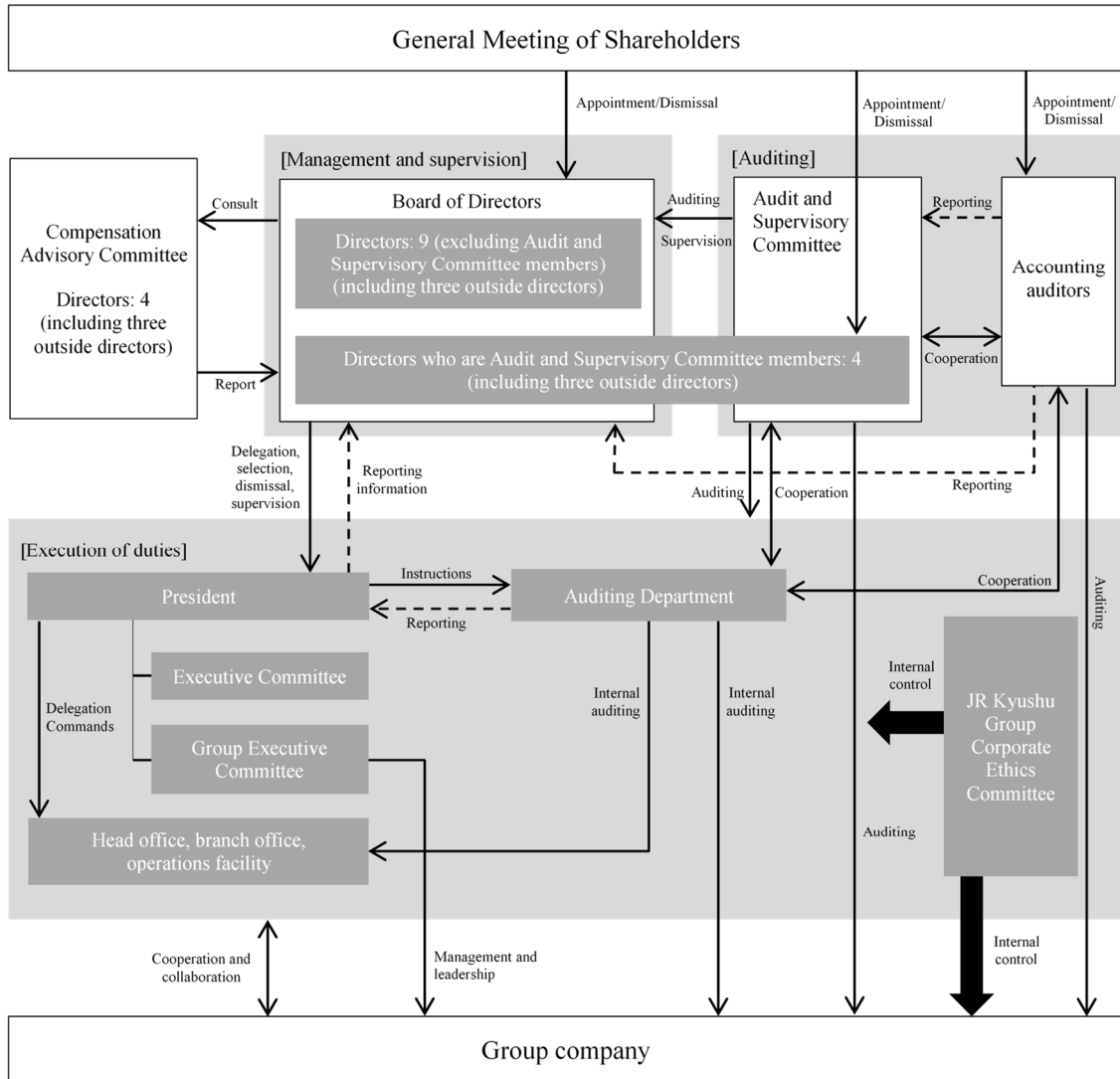
None

2. Items on Other Corporate Governance Systems

In order to deter insider trading, the Company has set up regulations for the prevention of insider trading that target items that may have a considerable effect on investor ratings, namely material facts as determined by the Financial Instruments and Exchange Act (hereinafter, “material facts”). Accordingly, internal information management and appropriate and timely disclosure are being implemented as laid out below.

- Employees in possession of material facts are to promptly transmit said information to an information security officer (general manager of Strategy Management Department) via the general manager of the relevant department (hereinafter, “supervisory general manager”). Material facts pertaining to subsidiaries are also to be transmitted to an information security officer via a supervisory general manager. When in doubt if obtained information falls under the category of “material facts,” an information security officer is to be consulted.
- Information security officers conduct necessary information management of material facts. They also control stock transactions and other trading activities of directors and employees in possession of material facts.
- To disclose material facts promptly, the information management office works in cooperation with the relevant departments on disclosure period and method.
- In addition, details on timely disclosure (with the exception of material facts) are stipulated in the securities exchanges’ securities listings regulations and are applied to the handling of material facts.

Reference Materials 1: Corporate Governance System



Category of officers	Name	Position	Data of officers	
Directors (excluding Audit and Supervisory Committee members)	1. Koji Karaike	Representative Director and Chairman	Number of directors	Male: 11
	2. Toshihiko Aoyagi	Representative Director and President		Female: 2
	3. Hayato Maeda	Director and Senior Managing Corporate Officer		Total: 13
	4. Ryuji Tanaka	Director and Senior Managing Corporate Officer	Ratio of independent outside directors	46.2%
	5. Yoji Furumiya	Director and Managing Corporate Officer		
	6. Masaya Hirokawa	Director and Managing Corporate Officer	Ratio of female directors	15.4%
	7. Koji Toshima	Director	Number of corporate officers (excluding directors)	14
		Outside Independent		
	8. Masayoshi Nuki	Director		
9. Izumi Kuwano	Director	Outside Independent Female		
Directors who are Audit and Supervisory Committee members	1. Eiichi Kuga	Director and Audit and Supervisory Committee member	Outside Independent	
	2. Yasuko Goto	Director and Audit and Supervisory Committee member	Female	
	3. Kazuhide Ide	Director and Audit and Supervisory Committee member	Outside Independent	
	4. Yasunori Eto	Director and Audit and Supervisory Committee member	Outside Independent	

Reference Materials 2: Overview of Appropriate Disclosure System

